

SPRINKLER HUBS MODELS 850, 851 & 853

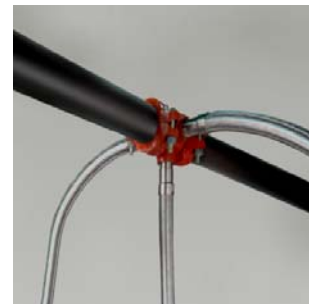
The **Shurjoint** Sprinkler Hub is a grooved-end manifold with a number of threaded outlets for connection with fire sprinkler flexible tubes. The Sprinkler Hub works as a hub for multiple sprinkler flexible tubes reducing the number of headers, drop nipples, and fittings. All outlets are female threaded 1" NPT or BSPT. Max working pressure: 300 psi (2.0 MPa) CWP

The C-to-E dimensions (shown as B in the dimension tables) conform to ANSI B16.3 Class 150.

All groove dimensions conform to ANSI / AWWA C606-04 and or ISO/FDIS 6182-12. For dimensional tolerances of cast fittings, refer to ISO/FDIS 6182-12 Table 3.

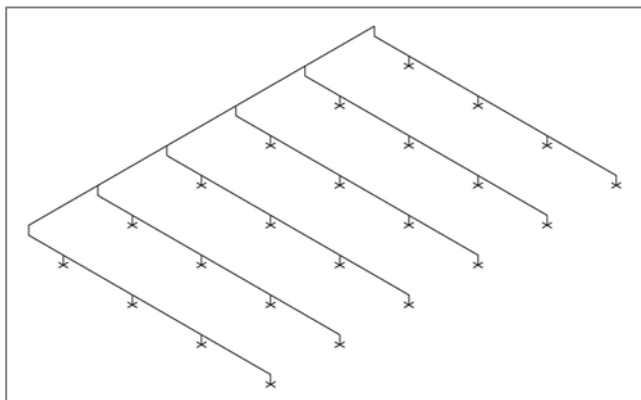


Before
Single outlet

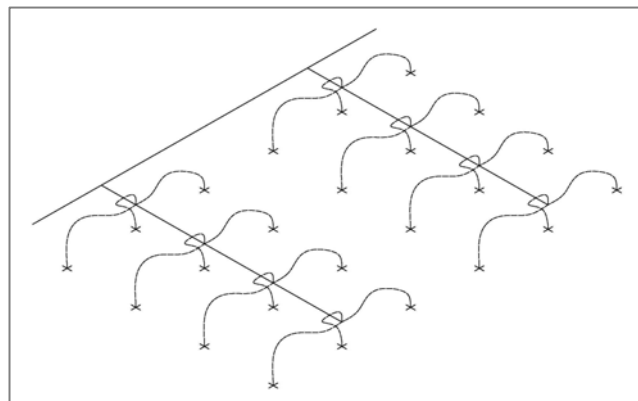


After
Multiple outlets

Before
Conventional



After
Using Sprinkler Hubs



MATERIAL SPECIFICATIONS

- **Body:**

Ductile iron to ASTM A536 Gr. 65-45-12. Min. tensile strength 448 MPa (65,000 psi)

- **Threads:**

NPT or BSPT (female)

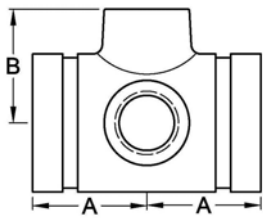
- **Body coating:**

Orange color painted or red RAL3000 color painted. Bare metal with a thin layer of rust-prevention oil

Hot dip galvanized

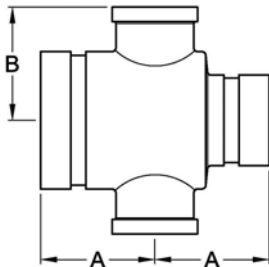
Job Name:	System No.	Location:	
Contractor:	Approved:	Date:	
Engineer:	Approved:	Date:	

Shurjoint product specifications in U.S. customary units and metric are approximate and are provided for reference only. For precise measurements, please contact **Shurjoint** Technical Service. **Shurjoint** reserves the right to change or modify product design, construction, specifications, or materials without prior notice and without incurring any obligations to make such changes and modifications on **Shurjoint** products previously subsequently sold.

MODEL 850 SPRINKLER HUB - 3 OUTLETS


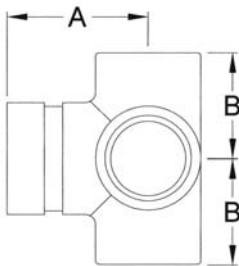
Model 850 Sprinkler Hub			
Size	A	B	N.W.
mm	mm	mm	kgs
in	in	in	Lbs
50 x 50 x 25 (3)	60	51	1.00
2 x 2 x 1 (3)	2.38	2.02	2.20
65 x 65 x 25 (3)	60	57	1.25
2-1/2 x 2-1/2 x 1 (3)	2.38	2.25	2.75

(:): Number of outlets

MODEL 851 REDUCING SPRINKLER HUB - 3 OUTLETS


Model 851 Reducing Sprinkler Hub			
Size	A	B	N.W.
mm	mm	mm	kgs
in	in	in	Lbs
50 x 40 x 25 (3)	60	51	1.00
2 x 1-1/2 x 1 (3)	2.38	2.02	2.20
65 x 40 x 25 (3)	60	57	1.20
2-1/2 x 1-1/2 x 1 (3)	2.38	2.25	2.65
65 x 50 x 25 (3)	60	60	1.30
2-1/2 x 2 x 1 (3)	2.38	2.25	2.86

(:): Number of outlets

MODEL 853 SPRINKLER END HUB - 4 OUTLETS


Model 853 Sprinkler Hub			
Size	A	B	N.W.
mm	mm	mm	kgs
in	in	in	Lbs
40 x 25 (4)	60	46	0.8
1-1/2 x 1 (4)	2.38	1.80	1.76
50 x 25 (4)	60	51	1.00
2 x 1 (4)	2.38	2.02	2.20
65 x 25 (4)	60	57	1.20
2-1/2 x 1 (4)	2.38	2.25	2.64

(:): Number of outlets

General Notes:

- Pressure ratings listed are CWP (cold water pressure) or maximum working pressure within the service temperature range of the gasket used in the coupling. For additional information contact **Shurjoint**.
- Maximum working pressures and end loads listed are total of internal and external pressures and loads based on Sch. 10 steel pipe with roll grooves to ANSI/AWWA C606-04 specifications. For information on other pipe schedules contact **Shurjoint**.
- For one time field test only the maximum joint working pressure may be increased 1-1/2 times the figures shown.
- **Warning:** Piping systems must always be depressurized and drained before attempting disassembly and or removal of any components.
- **Shurjoint** reserves the right to change specifications, designs and or standard equipment without notice and without incurring any obligations.