



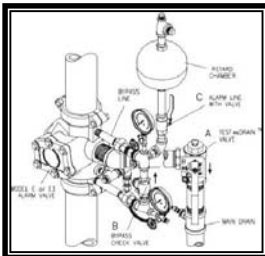
Model E1
Grooved x Flanged



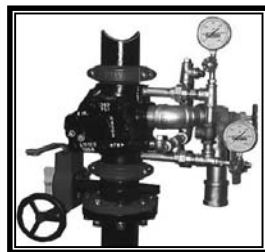
Model E1
Flanged x Flanged



Model E3
Grooved x Grooved



Model E3 With Trim
With TestAnDrain™



Model E3 With Trim
Without TestAnDrain™

ALARM VALVES

- See Bulletins 407, 417, 408, 418, 409, 410

Part Number		New E3		List Price
Flanged x Flanged	Flanged x Grooved	Grooved x Grooved	Size	
NEW MODEL E3 HIGH PRESSURE VALVE OR MODEL E VALVE				
25A	—	—	2-1/2"	\$ 1,260.00
3A	3AG	—	3"	\$ 1,260.00
4A	4AG	4AGG	4" (100mm)	\$ 1,260.00
6A	6AG	6AGG	6" (150mm)	\$ 1,549.00
8A	8AG	8AGG	8" (200mm)	\$ 2,257.00
NEW MODEL E3 HIGH PRESSURE VALVE OR E METRIC FLANGED				
65MMA	—	—	65MM Metric	\$ 1,204.74
100MMA	—	—	100MM Metric	\$ 1,240.70
150MMA	—	—	150MM Metric	\$ 1,438.49
—	—	6102065518	165MM Metric	\$ 1,474.48
200MMA	—	—	200MM Metric	\$ 1,888.04

Open	Closed	Description	List Price
NEW MODEL E3 GALVANIZED TRIM (ONLY) — PREASSEMBLED*			
—	4E3P	Vertical — 4", 6", 165mm	\$ 999.00
—	8E3P	Vertical — 8"	\$ 999.00
—	4E3HP	Horizontal — 4", 6", 165mm	\$ 1,018.00
—	8E3HP	Horizontal — 8"	\$ 1,018.00
—	4E3TDP	Vertical — 4", 6", 165mm (W/ Test And Drain)**	\$ 1,769.00
—	8E3TDP	Vertical — 8" (W/ Test And Drain)	\$ 1,769.00
—	4E3HTDP	Horizontal — 4", 6", 165mm (W/ Test And Drain)**	\$ 1,789.00
—	8E3HTDP	Horizontal — 8" (W/ Test And Drain)	\$ 1,789.00
—	OPEN	Optional Open Drain Kit (See Table Below)	\$ 226.00
—	E3PR	Optional E3 Pressure Relief Trim Kit (See Table Below)	\$ 273.00
NEW MODEL E3 GALVANIZED TRIM (ONLY) — LOOSE			
—	4E3L	Vertical — 4", 6", 165mm	\$ 815.00
—	8E3L	Vertical — 8"	\$ 815.00
—	4E3TDL	Vertical — 4", 6", 165mm (W/ Test And Drain)**	\$ 1,586.00
—	8E3TDL	Vertical — 8" (W/ Test And Drain)**	\$ 1,586.00
—	4E3HL	Horizontal — 4", 6", 165mm	\$ 835.00
—	8E3HL	Horizontal — 8"	\$ 835.00
—	4E3HTDL	Horizontal — 4", 6", 165mm (W/ Test And Drain)**	\$ 1,605.00
—	8E3HTDL	Horizontal — 8" (W/ Test And Drain)**	\$ 1,605.00
—	OPEN	Optional Open Drain Kit (See Table Below)	\$ 226.00
—	E3PR	Optional E3 Pressure Relief Trim Kit (See Table Below)	\$ 273.00
E1 TRIM (ONLY) PREASSEMBLED* OR LOOSE			
—	3TPO	3TPO	\$ 999.00
—	3TCG	3TCG	\$ 815.00

* Order Retard Chamber & Mechanical Sprinkler Alarm Separately

Open Trim Includes:

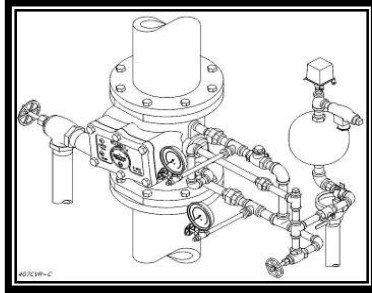
Item	P/N	Description	Units
1	75000050	Priming Cup, 1/2" NPT	1
2	98543212	Nipple, Pipe, Galv. 1/2" Close	2
3	98840181	Valve, Check Swing 1/2"	1
4	98174401	Elbow, Galv. 1/2" NPT	1
5	98543209	Nipple, Pipe Galv. 1/2" x 2"	1
6	96606623	Tee, Galv. 2" x 2" x 1/2"	1
7	98543291	Nipple, Pipe, Galv. 2" x 10"	1

Pressure Relief Trim Kit Includes:

Item	P/N	Description	Units
1	98840194	Relief Valve, 1/2", 175 psig	1
2	98543212	Nipple, Pipe Galv. 1/2" Close	1
3	96920925	Flex Line, Steel, 3/8" x 20"	1
4	98048022	Bushing Reducer, Galv. 1/2" x 3/4"	1
5	95086903	Tee, Male Branch, 3/8" x 1/4" NPT	1

**Test And Drain Valve, with optional Pressure Relief, exercises the Clapper with Alarm Test.

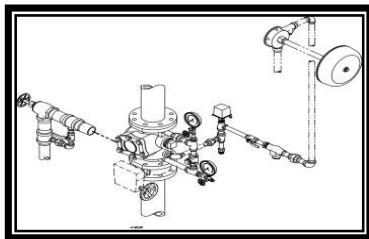
Functions like the Inspector's Test Port with greater convenience.



ALARM VALVES

- See Bulletins 407, 417, 408, 418

Description	Part Number	List Price
FULLY ASSEMBLED VALVE (FLANGED X FLANGED)		
2-1/2" Factory Trimmed	25AFTO	\$ 2,854.00
3" Factory Trimmed	3AFTO	\$ 2,854.00
4" Factory Trimmed	4AFT	\$ 2,854.00
6" Factory Trimmed	6AFT	\$ 3,131.00
8" Factory Trimmed	8AFT	\$ 3,866.00
FULLY ASSEMBLED VALVE (FLANGED X GROOVED)		
3" Factory Trimmed	3AGFTO	\$ 2,854.00
4" Factory Trimmed	4AGFT	\$ 2,854.00
6" Factory Trimmed	6AGFT	\$ 3,131.00
8" Factory Trimmed	8AGFT	\$ 3,866.00
FULLY ASSEMBLED VALVE (GROOVED X GROOVED)		
4" Factory Trimmed	4AGGFT	\$ 2,854.00
6" Factory Trimmed	6AGGFT	\$ 3,131.00
8" Factory Trimmed	8AGGFT	\$ 3,866.00



LPC VALVE SETS

Valve Stations complete

- Valve
- Trim (Segmented)
- Butterfly Valve

Description	Part Number	List Price
WET TRIM WITH RETARD		
100mm	6503004210	\$ 3,388.47
150mm	6503004215	\$ 3,935.56
200mm	6503004220	\$ 4,941.52
WET TRIM WITHOUT RETARD		
100mm	6503004100	\$ 3,141.39
150mm	6503004115	\$ 3,688.49
200mm	6503004120	\$ 4,694.43
WET/DRY TRIM WITH RETARD		
100mm	6503004410	\$ 6,865.19
150mm	6503004415	\$ 8,029.98
WET/DRY TRIM WITHOUT RETARD		
100mm	6503004310	\$ 6,600.45
150mm	6503004315	\$ 7,747.60
LPC VALVE TRIMS PART ASSEMBLED		
Wet Trim with Retard	6502070110	\$ 1,440.78
Wet Trim without Retard	6502070100	\$ 1,182.18
Wet/Dry Trim with Retard	6502070010	\$ 2,308.98
Wet/Dry Trim without Retard	6502070000	\$ 2,013.42



C — Mechanical Spk. Alarm

ALARM VALVES

- See Bulletins 407, 417, 408, 418

Description	Part Number	List Price
MISCELLANEOUS — ALARM VALVE TRIM		
Constant — 2-1/2" & 3"	6502054100	\$ 815.00
Constant — 4", 6" & 8"	6502053100	\$ 815.00
Press. Rel. kit — 2-1/2" & 3"	6502050000	\$ 265.00
Press. Rel. kit — 4", 6" & 8"	6502050000	\$ 265.00
Galvanized — 2-1/2" & 3"	6502053600	\$ 896.00
Galvanized — 4", 6" & 8"	6502053600	\$ 896.00
RETARD CHAMBER & MECHANICAL SPRINKLER ALARM		
Retard Chamber — E-1	RCT	\$ 501.00
Mech. Sprk. Alarm — C	WM	\$ 679.00
VALVE SEAT WRENCHES		
2" & 3" Model E Alarm Valve	W23AV	\$ 163.00
4" Model E Alarm Valve	W4DV	\$ 180.00
6" Model E Alarm Valve	W6DV	\$ 193.00
8" Model E Alarm Valve	W8AV	\$ 207.00

* Order Retard Chamber & Mechanical Sprinkler Alarm Separately.



G Right Check Riser



G Swing Check



CVE Swing Check



DW Wafer

Part Name	Part Number	List Price
MODEL G RISER CHECK		
2-1/2"	25RC	\$ 546.00
3"	3RC	\$ 546.00
4"	4RC	\$ 546.00
6"	6RC	\$ 1,031.00
2-1/2" & 3" Trim	25RTG	\$ 370.00
4" & 6" Trim	4RTG	\$ 370.00
MODEL G GROOVE/GROOVE CHECK		
2-1/2"	25CK	\$ 378.00
3"	3CK	\$ 378.00
4"	4CK	\$ 378.00
6"	6CK	\$ 914.00
SWING CHECK VALVES - VALVES ONLY		
CVE 4" (100mm)	4CVE	\$ 998.27
CVE 6" (150mm)	6CVE	\$ 1,297.74
CVE 165mm	CVE165MM	\$ 1,297.74
CVE 8" (200mm)	8CVE	\$ 1,996.53
DW Wafer (4") - Add per valve	DW	\$ 417.00
FULLY ASSEMBLED SWING CHECK VALVES		
CVE 4" (100mm)	4CVET	\$ 1,494.00
CVE 6" (150mm)	6CVET	\$ 1,792.00
CVE 8" (200mm)	8CVET	\$ 2,615.51
TRIM FOR SWING CHECK VALVES		
All Sizes	6506000044	\$ 1,039.86

CHECK VALVES

- See Bulletins 803, 806, 807, 810



NEW

Model DDX
Low Pressure Dry Pipe System

Part Name	Part Number	List Price
DDX LO-PRESSURE DRY PIPE - VALVE ONLY		
Model DDX-LP Valve - 2"	2DDX	\$ 3,379.00
Model DDX-LP Valve - 2-1/2"	25DDX	\$ 3,379.00
Model DDX-LP Valve - 3"	3DDX	\$ 3,488.00
Model DDX-LP Valve - 76MM	6103027600	\$ 3,488.00
Model DDX-LP Valve - 4"	4DDX	\$ 3,565.00
Model DDX-LP Valve - 6"	6DDX	\$ 4,382.00
Model DDX-LP Valve - 8"	8DDX	\$ 7,280.00
TRIM (ONLY) - INDIVIDUAL PARTS		
2", 2-1/2", 3" Individual Parts (Valve Sold Separately)	25DDXDRL	\$ 3,123.04
4" & 6" Individual Parts (Valve Sold Separately)	4DDXDRL	\$ 3,123.04
8" Individual Parts (Valve Sold Separately)	8DDXDRL	\$ 3,500.00
TRIM (ONLY) - SEGMENTALLY ASSEMBLED		
2", 2-1/2" & 3" Segmentally Assembled (Valve Sold Separately)	25DDXDRLP	\$ 3,337.75
4" & 6" Segmentally Assembled (Valve Sold Separately)	4DDXDRLP	\$ 3,337.75
8" Segmentally Assembled (Valve Sold Separately)	8DDXDRLP	\$ 4,100.00
DDX ACCELERATOR & TRIM KIT		
Accelerator & Trim for DDX 2", 2-1/2", 3", 4" 6" & 8", Type F & LP	AEDDX	\$ 1,385.00
DDX-LP FULLY ASSEMBLED VALVE		
Model DDX-LP 2" Valve with Control Valve	2DDXFLPV	\$ 8,775.00
Model DDX-LP 2" Valve without Control Valve	2DDXFLP	\$ 8,012.00
Model DDX-LP 2-1/2" Valve with Control Valve	25DDXFLPV	\$ 8,775.00
Model DDX-LP 2-1/2" Valve without Control Valve	25DDXFLP	\$ 8,012.00
Model DDX-LP 3" Valve with Control Valve	3DDXFLPV	\$ 8,938.00
Model DDX-LP 3" Valve without Control Valve	3DDXFLP	\$ 8,175.00
Model DDX-LP 76MM Valve without Control Valve	6505027621	\$ 8,175.00
Model DDX-LP 4" Valve with Control Valve	4DDXFLPV	\$ 8,986.00
Model DDX-LP 4" Valve without Control Valve	4DDXFLP	\$ 8,223.00
Model DDX-LP 6" Valve with Control Valve	6DDXFLPV	\$ 9,684.00
Model DDX-LP 6" Valve without Control Valve	6DDXFLP	\$ 8,921.00
Model DDX-LP 165MM Valve without Control Valve	6505065221	\$ 8,921.00
Model DDX-LP 8" Valve with Control Valve	8DDXFLPV	\$ 13,700.00
Model DDX-LP 8" Valve without Control Valve	8DDXFLP	\$ 11,500.00

The DDX Valve replaces LDX Installations.

DDX Features:

- **NEW Sizes - 2", 2-1/2", 3", 76MM & 8"**
- Plus 4" (100mm), 6" (150mm) and 165MM
- cULus Listed & FM Approved
- Only one main drain
- 250 psi (17.2 bar)
- Lightweight, both ends grooved
- System side check valve not required
- External reset
- Quick installing segmented trim
- For DDX LP Dry Pipe Valve Systems - 2", 2-1/2", 3 & 76MM Sizes - see Bulletins 333 & 334
- For DDX LP Dry Pipe Valve Systems - 4", 6", & 165MM Sizes - see Bulletins 357 & 358
- For DDX LP Dry Pipe Valve Systems - 8" Size - see Bulletins 335 & 336
- For DDX Deluge Valves - 2", 2-1/2", 3 & 76MM Sizes - see Bulletins 512 & 513
- For DDX Deluge Valves - 4", 6", & 165MM Sizes - see Bulletins 510 & 511
- For DDX Deluge Valves - 8" Size - see Bulletins 514 & 515



Model A



Model D

DRY PIPE VALVES

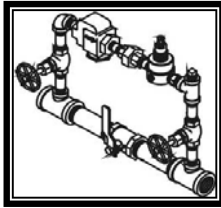
- See Bulletins 350, 351, 352, 353

Part Name	Part Number	List Price
MODEL A THREADED OR GROOVED		
Model A - 2-1/2" — Threaded	25D	\$ 2,578.00
Model A - 2-1/2" — Grooved	25DG	\$ 2,578.00
MODEL A METRIC		
Model A - 65mm	6101020020	\$ 2,382.52
MODEL D FLANGED OR GROOVED		
4" — Flanged	4D	\$ 3,036.00
4" — Grooved	4DG	\$ 3,036.00
6" — Flanged	6D	\$ 3,857.00
6" — Grooved	6DG	\$ 3,857.00
MODEL D METRIC		
Model D — 100mm	6101040520	\$ 3,035.24
Model D — 150mm	6101060520	\$ 3,264.94
TRIM (ONLY) — INDIVIDUAL PARTS		
2-1/2"	25BDRYG	\$ 1,256.00
4"	4BDRYG	\$ 1,256.00
6"	4BDRYG	\$ 1,256.00
TRIM (ONLY) — SEGMENTALLY ASSEMBLED		
2-1/2"	25BDRYPG	\$ 1,459.00
4"	4BDRYPG	\$ 1,459.00
6"	4BDRYPG	\$ 1,459.00
FACTORY TRIMMED VALVES¹		
4" — Flanged	4DFTG	\$ 4,669.00
4" — Grooved	4DGFTG	\$ 4,669.00
4" w/ Accelerator — Flanged	4DFTAG	\$ 6,400.00
4" w/ Accelerator — Grooved	4DGFTAG	\$ 6,400.00
6" — Flanged	6DFTG	\$ 5,545.00
6" — Grooved	6DGFTG	\$ 5,545.00
6" w/ Accelerator — Flanged	6DFTAG	\$ 7,237.00
6" w/ Accelerator — Grooved	6DGFTAG	\$ 7,237.00

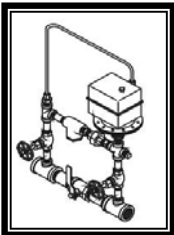
¹ Factory Trimmed Valve Includes Valve and Trim



Model B-1 Accelerator



Model A-2 Air Maint. Dev



Model B-1 Air Maint. Dev

VALVES ACCESSORIES

- See Bulletins 250, 251, 320, 322



NEW

ACD Dry System Auxiliary Condensate Drain with Sight Glass

- See Bulletin 441

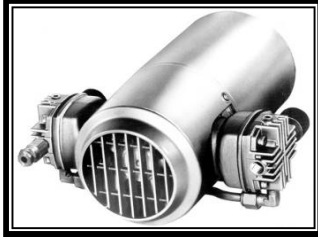
Part Name	Part Number	List Price
ACCELERATOR		
B1 Accelerator	AE	\$ 1,298.00
B2 Accelerator Trim	ACT	\$ 534.00
Replacement Parts Kit - B	BRPK	\$ 441.00
Replacement Parts Kit - B1	B1RPK	\$ 441.00
DRY VALVE TRIM ACCESSORIES		
Fill Line- Model A (2-1/2")	25FLTG	\$ 169.00
Fill Line- Model D (4 & 6")	4FLTG	\$ 169.00
Priming Chamber	PCG	\$ 295.00
AIR MAINTENANCE DEVICE		
A-2 Owner's Air	AMDAG	\$ 815.00
B-1 Individual Compressor	AMDBG	\$ 926.00
C Superrol Systems	AMDCG	\$ 1,222.00
PRESSURE ALARM SWITCHES		
EPS10-1 Alarm, Single SPDT (System Sensor)- Set 4-8PSI	EPS10-1	\$ 198.60
EPS10-2 Alarm, Double SPDT (System Sensor)- Set 4-8PSI	EPS10-2	\$ 204.70
EPS40-1 Supervisory, Single SPDT- Adj 10-100PSI	EPS40-1	\$ 187.40
EPS40-2 High/Low Supervisory Double SPDT- Adj 10-100PSI	EPS40-2	\$ 204.70
VALVE SEAT WRENCHES		
2-1/2" Model A Dry Pipe Valve	W4DPV	\$ 127.00
4" Model D Dry Pipe Valve	W4DPV	\$ 127.00
6" Model D Dry Pipe Valve	W6DPV	\$ 139.00

Part Name	Part Number	List Price
DRY SYSTEM AUXILIARY CONDENSATE DRAIN		
ACD Dry System Auxiliary Condensate Drain w- Sight Glass	ACD	\$ 450.00

Model ACD Dry System Auxiliary Condensate Drain or "Drum Drip Drain" is used in Dry Pipe and Preaction Sprinkler Systems, which meet NFPA 13 (2007) Installation Requirements section 8.16.2.5.3.4.

Features:

1. Sight Glass included
2. Eliminates field assembly
3. Ball Valves - quick operation
4. No assembly required
5. 1" NPT Union end connection for ease of installation
6. 1" Plug included



AIR COMPRESSORS

- See Bulletin 275
& Gast F-30

Part Name	Part Number	List Price
AIR COMPRESSOR — BARE		
1/6 HP, 115-60-1, Gast 1LAA-10-M100X	16A	\$ 860.00
1/4 HP, 115-60-1, Gast 2LAF-10-M200X	14A	\$ 1,000.00
1/3 HP, 115-60-1, Gast 3LBA-33-M300X	13A	\$ 1,155.00
1/2 HP, 115-60-1, Gast 4LCB-10-M450X	12A	\$ 1,555.00
3/4 HP, 115/230-60-1, Gast 5LCA-10-M550X	34A	\$ 1,615.00
3/4 HP, 230/460-60-3, Gast 5LCA-10-M553	34A3	\$ 2,000.00
1 HP, 115/230-60-1, Gast 6LCF-10-M616X	1A	\$ 2,070.00
1-1/2 HP, 115/230-60-1, Gast 7LDE-10-M700X	112A	\$ 3,434.00
2 HP, 115/230-60-1, Gast 8LDF-10-M850X	2A	\$ 4,100.00
WITH CHECK VALVE AND PRESSURE SWITCH		
1/6 HP, 115-60-1, Gast 1LAA-32-M100X	16PA	\$ 1,180.00
1/4 HP, 115-60-1, Gast 2LAF-12-M200X	14PA	\$ 1,385.00
1/3 HP, 115-60-1, Gast 3LBA-32-M300X	13PA	\$ 1,505.00
1/2 HP, 115-60-1, Gast 4LCB-21-M450X	12PA	\$ 1,811.00
3/4 HP, 115/230-60-1, Gast 5LCA-22-M550X	34PA	\$ 1,985.00
1 HP, 115/230-60-1, Gast 6LCF-13-M616X	1PA	\$ 2,385.00
1-1/2 HP, 115/230-60-1, Gast 7LDE-16-M750X	112PA	\$ 3,685.00
2 HP, 115/230-60-1, Gast 8LDF-16-M850X	2PA	\$ 4,665.00
AIR COMPRESSORS -- TANK MOUNTED		
1/6 HP, 115-60-1, Gast 1LAA-11T-M100X, 2 GAL	16TA	\$ 1,910.00
1/4 HP, 115-60-1, Gast 2LAF-11T-M200X, 12 GAL	14TA	\$ 2,485.00
1/3 HP, 115-60-1, Gast 3LBA-11T-M300X 12 GAL	13TA	\$ 2,725.00
1/2 HP, 115-60-1, Gast 4LCB-11T-M450X, 20 GAL	12TA	\$ 3,215.00
3/4 HP, 115/230-60-1, Gast 5LCA-11T-M550X, 20 GAL	34TA	\$ 3,375.00
1 HP, 115/230-60-1, Gast 6LCF-11T-M616X, 30 GAL	1TA	\$ 4,122.00
1-1/2 HP, 115/230-60-1, Gast 7LDE-11T-M750X, 30 GAL	112TA	\$ 6,200.00
2 HP, 115/230-60-1, Gast 8LDF-11TC-M850X, 30GAL	2TA	\$ 8,355.00
AIR COMPRESSORS -- REPAIR KITS *		
1/3 HP, Repair Kit	6888000010	\$ 275.00
3/4 HP, Repair Kit	6888000020	\$ 340.00
1-1/2 HP, Repair Kit	6888000030	\$ 670.00
Riser Mounting Brackets	6999990969	\$ 136.00

*Repair Kit Contains Gaskets, Piston, Seals, Piston Rings, In/Out Valve Plates, Manifold Seals and Felts (for Filters)

VALVE ACCESSORIES

Part Name	Part Number	List Price
PRESSURE GAUGES		
Water	WATER	\$ 59.34
Air	AIR	\$ 63.43
Air (0-60 oz/in ²)	98248002	\$ 224.70
INSPECTORS TEST CONNECTIONS		
Sight Test Type (Model B)	ISC	\$ 245.00
Blind Test Type (Model A)	IBC	\$ 82.00
AUTOMATIC BALL DRIPS		
1/2" NPT (Female)	78653500	\$ 142.10
3/4" NPT (Female)	78653700	\$ 162.40
MECHANICAL BALL DRIPS		
1/2" NPT (Female)	78653100	\$ 253.70
STRAINER		
3/4" NPT (Female)	78650200	\$ 149.10
MISCELLANEOUS		
Model C Sight Drain 2" NPT (Female)	6863000000	\$ 266.00
Model B Drum Drip Only 3/4" NPT (Female)	71010448	\$ 163.00
Model A Fill Cup 1/2" NPT (Female)	75000050	\$ 76.90
Model A Fill Cup 3/4" NPT (Female)	75000075	\$ 87.00
Model A Control Valve Seal Only	6869800000	\$ 22.00
SIGNS—MODEL A		
Valve Control Sign	6892011000	\$ 9.10
SIGNS—MODEL B		
Inspector Test Sign	ITS	\$ 3.10
Open Sprinkler Control Sign	OSCS	\$ 3.10
Open Sprinkler Drain Sign	OSDS	\$ 8.90
Test Valve Sign	TVS	\$ 3.10
Water Motor Line Sign	WMLS	\$ 3.10
Auxiliary Drain Sign	ADS	\$ 3.10
Main Drain Sign	MDS	\$ 3.10
Drain Sign	DS	\$ 3.10
Alarm Test Sign	ATS	\$ 3.10
SIGNS—MODEL C		
Cold Weather Sign	CWS	\$ 9.10
SIGNS—MODEL D		
Fire Alarm Sign	FAS	\$ 9.10
SIGNS—MODEL E		
Hydraulically Calculated System	HCS	\$ 9.10

Please refer to the latest sales bulletin for specific approval listings and available finishes.
See our "Specialties Page" for special finish charges — including Teflon Tape. Items that are MTO (indicated by "x") allow 7-10 work days.



NEW

Model MP (Multi-Purpose)
Residential Riser

- See Bulletin 414

Part Name	Size	Part Num	List Price
MULTI-PURPOSE RISER			
Model MP	1" (30mm)	1MP	\$ 642.00
RISER ACCESSORIES			
Optional Support Bracket Kit		RRB	\$ 57.00

- 1" Residential Riser for providing water flow alarm on Multipurpose Residential Fire Sprinkler Systems
- cULus Listed



Residential Riser

- See Bulletin 425

Part Name	Size	Part Num	List Price
RISER ASSEMBLIES			
Base Unit	1" (30mm)	1RR	\$ 642.00
Base Unit and Pressure Relief Valve Trim	1" (30mm)	1RRT	\$ 931.00
Base Unit with 1 x 1/2" Test & Drain	1" (30mm)	1RRD	\$ 1,009.00
Base Unit	1-1/2" (40mm)	15RR	\$ 642.00
Base Unit and Pressure Relief Valve Trim	1-1/2" (40mm)	15RRT	\$ 931.00
Base Unit with 1 x 1/2" Test & Drain	1-1/2" (40mm)	15RRD	\$ 1,009.00
Base Unit	2" (50mm)	2RR	\$ 718.00
Base Unit and Pressure Relief Valve Trim	2" (50mm)	2RRT	\$ 1,006.00
Base Unit with 1 x 1/2" Test & Drain	2" (50mm)	2RRD	\$ 1,084.00
RISER ASSEMBLIES - CANADIAN VERSION			
Base Unit - Canada	1" (30mm)	1RRC	\$ 642.00
Base Unit & Pressure Relief Valve Trim - Canada	1" (30mm)	1RRTC	\$ 932.00
Base Unit with 1 x 1/2" Test & Drain - Canada	1" (30mm)	1RRDC	\$ 1,009.00
Base Unit - Canada	1-1/2" (40mm)	15RRC	\$ 642.00
Base Unit & Pressure Relief Valve Trim - Canada	1-1/2" (40mm)	15RRTC	\$ 932.00
Base Unit with 1 x 1/2" Test & Drain - Canada	1-1/2" (40mm)	15RRDC	\$ 1,009.00
Base Unit & Pressure Relief Valve Trim - Canada	2" (50mm)	2RRC	\$ 718.00
Base Unit & Pressure Relief Valve Trim - Canada	2" (50mm)	2RRTC	\$ 1,006.00
Base Unit with 1 x 1/2" Test & Drain - Canada	2" (50mm)	2RRDC	\$ 1,084.00
RISER ACCESSORIES			
Pressure Relief Valve Trim (good for all sizes)		15PRTC	\$ 152.00
Optional Support Bracket Kit		RRB	\$ 57.00

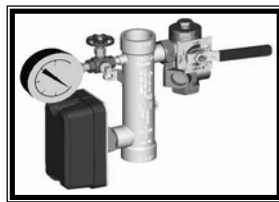
Note: Other combinations available upon request.



Model CR Commercial Riser

- For Commercial Applications
- See Bulletin 615

NEW



Model CR Commercial Riser with Test & Drain

- For Commercial Applications
- See Bulletin 615

Part Name	Size	Part Number	List Price
COMMERCIAL RISER			
Model CR Commercial Riser - Threaded	1-1/2" (40mm)	15CR	\$ 704.98
Model CR Commercial Riser - Threaded	2" (50mm)	2CR	\$ 704.98
Model CR Commercial Riser - Grooved	2" (50mm)	2CRG	\$ 704.98
Model CR Commercial Riser - Grooved	2-1/2" (65mm)	25CRG	\$ 785.76
Model CR Commercial Riser - Grooved	3" (80mm)	3CRG	\$ 822.47
Model CR Commercial Riser - Grooved	4" (100mm)	4CRG	\$ 998.71
Model CR Commercial Riser - Grooved	6" (150mm)	6CRG	\$ 1,101.52
Model CR Commercial Riser - Grooved	8" (200mm)	8CRG	\$ 1,219.01

Part Name	Size	Part Number	List Price
CR COMMERCIAL RISER WITH TEST & DRAIN			
Model CR Commercial Riser w- Test&Drain - Threaded	1-1/2" (40mm)	15FC	\$ 954.65
Model CR Commercial Riser w- Test&Drain - Threaded	2" (50mm)	2FC	\$ 969.35
Model CR Commercial Riser w- Test&Drain - Grooved	2" (50mm)	2FCG	\$ 1,086.84
Model CR Commercial Riser w- Test&Drain - Grooved	2-1/2" (65mm)	25FC	\$ 1,145.58
Model CR Commercial Riser w- Test&Drain - Grooved	3" (80mm)	3FC	\$ 1,160.27
Model CR Commercial Riser w- Test&Drain - Grooved	4" (100mm)	4FC	\$ 1,395.27
Model CR Commercial Riser w- Test&Drain - Grooved	6" (150mm)	6FC	\$ 1,439.32
Model CR Commercial Riser w- Test&Drain - Grooved	8" (200mm)	8FC	\$ 1,615.58
PRESSURE RELIEF KITS			
Pressure Relief Trim - NPT	1-1/2" (40mm) - 2" (50mm)	15PRTCR	\$ 152.00
Pressure Relief Trim - Grooved End	2" (50mm)	2PRTCRG	\$ 152.00
Pressure Relief Trim - Grooved End	2-1/2" (65mm) - 3" (80mm)	25PRTCRG	\$ 152.00
Pressure Relief Trim - Grooved End	4" (150mm) - 8" (200mm)	4PRTCRG	\$ 152.00