



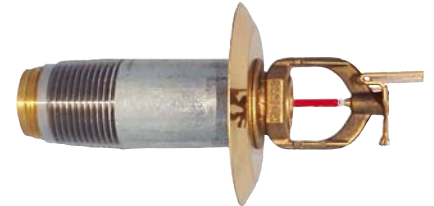
QUICK RESPONSE
AUTOMATIC SPRINKLERS
GL SERIES
DRY TYPE
HORIZONTAL SIDEWALL
RECESSED HORIZONTAL SIDEWALL

DESCRIPTION AND OPERATION

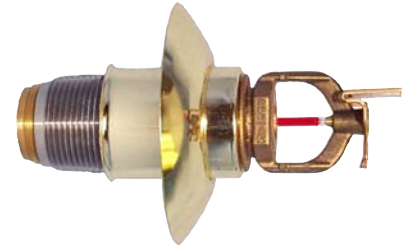
The Globe Quick Response GL Series Dry Type Horizontal Sidewall Sprinkler is designed for use in special applications such as freezing environments and conditions where sediment or foreign materials might accumulate in ordinary horizontal pipe nipples.

The Globe Quick Response GL Series Dry Type Horizontal Sidewall Sprinkler utilizes a 3mm frangible glass ampule as the thermosensitive element. This provides sprinkler operation approximately six times faster than ordinary sprinklers. At the ampule's rated temperature, the sprinkler opens releasing the bulb seat, causing the inner tube assembly to move, allowing the spring assembly to pivot alongside the inner tube. At this time, water flows through the sprinkler and is distributed by the deflector, in an approved discharge pattern. It can be installed wherever standard spray sprinklers are specified but offers the additional feature of greatly increased safety to life. Quick Response Sprinklers should be used advisedly and under the direction of approving authorities having jurisdiction.

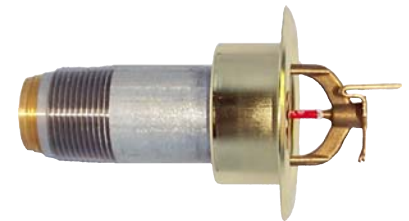
The heart of Globe's GL Series sprinkler proven actuating assembly is a hermetically sealed frangible glass ampule that contains a precisely measured amount of fluid. When heat is absorbed, the liquid within the bulb expands increasing the internal pressure. At the prescribed temperature the internal pressure within the ampule exceeds the strength of the glass causing the glass to shatter. This results in water discharge which is distributed in an approved pattern.



QUICK RESPONSE
DRY NON-ADJUSTABLE
HORIZONTAL SIDEWALL



QUICK RESPONSE
DRY SLEEVE & SKIRT
HORIZONTAL SIDEWALL



QUICK RESPONSE
DRY RECESSED
HORIZONTAL SIDEWALL

TECHNICAL DATA

- See reverse side for Approvals and Specifications.
- Temperature Ratings - 135°F (57°C), 155°F (68°C), 175°F (79°C), 200°F (93°C), 286°F (141°C).
- Water Working Pressure Rating - 175 psi (12 Bars).
- Factory tested hydrostatically to 500 psi (34 Bars).
- Maximum low temperature glass bulb rating is -67°F (-55°C).
- Frame - bronze • Deflector - brass • Screw - brass
- Bulb seat - brass • Spring - teflon coated nickel alloy
- Retainer - brass • Pin - stainless steel • Torsion spring - stainless steel
- Bulb - glass with alcohol based solution, 3mm • Orifice insert - brass
- 3/4" NPT or 1" NPT • Outer tube - galvanized steel pipe
- Inner tube - stainless steel

• SPRINKLER TEMPERATURE RATING/CLASSIFICATION and COLOR CODING

CLASSIFICATION	AVAILABLE SPRINKLER TEMPERATURES		BULB COLOR	N.F.P.A. MAXIMUM CEILING TEMPERATURE	
ORDINARY	135°F/155°F	57°C/68°C	ORANGE/RED	100°F	38°C
INTERMEDIATE	175°F/200°F	79°C/93°C	YELLOW/GREEN	150°F	66°C
HIGH	286°F	141°C	BLUE	225°F	107°C

QUICK RESPONSE AUTOMATIC SPRINKLERS GL SERIES DRY TYPE

SPECIFICATIONS

NOMINAL "K" FACTOR		THREAD SIZE	LENGTH	FINISHES
5.6	(80 metric)	3/4" or 1" NPT	cULus Variable to 48"	Factory Bronze Satin Chrome ¹ Bright Chrome White Polyester Black Polyester Lead Coated ²
8.1	(116 metric)	1" NPT	FM Variable to 36"	

NOTE:

Metric conversions are approximate.

cULus listed corrosion resistant: Polyester must be specified on order.

¹Finishes available on special order.

²Lead Coated is UL approved only.

APPROVALS

STYLE	SIN CODE	K FACTOR	THREAD SIZE	135°F 57°C	155°F 68°C	175°F 79°C	200°F 93°C	286°F 141°C	* FM	cULus	NYC - DOB MEA 101-92-E
HORIZONTAL SIDEWALL	GL5641	5.6 ^a	1" NPT	X	X	X	X	X	X	X	X
	GL5642	5.6 ^a	3/4" NPT	X	X	X	X	X	-	X	X
	GL8141	8.1 ^b	1" NPT	X	X	X	X	X	-	X	X
RECESSED HORIZONTAL SIDEWALL	GL5641	5.6 ^a	1" NPT	X	X	X	X	X	X	X	X
	GL5642	5.6 ^a	3/4" NPT	X	X	X	X	X	-	X	X
	GL8141	8.1 ^b	1" NPT	X	X	X	X	X	-	X	X

NOTE:

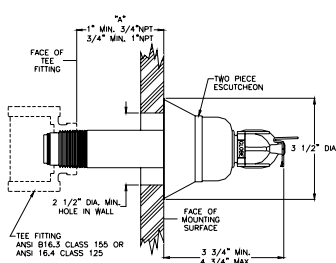
^aListed for light hazard only with deflector from 4" - 12" below the ceiling.

^bListed for light and ordinary hazard with deflector from 4" - 12" below the ceiling.

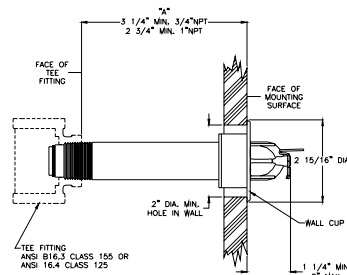
* Recessed Horizontal Sidewall - FM Approved 155°F and 200°F only.

* Horizontal Sidewall - FM Approved 155°F, 200°F, and 286°F only.

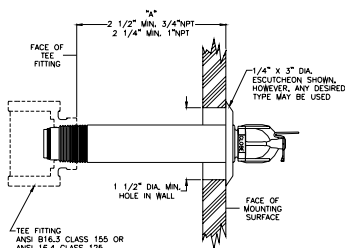
CROSS SECTIONS



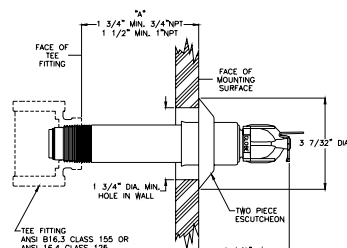
**EXTENDED
HORIZONTAL SIDEWALL**



**RECESSED
HORIZONTAL SIDEWALL**



**NON-ADJUSTABLE
HORIZONTAL SIDEWALL**



**SLEEVE & SKIRT
HORIZONTAL SIDEWALL**

IMPORTANT INSTALLATION DATA

Globe GL Series Dry Horizontal Sidewall sprinklers should be installed in accordance with the requirements set forth in NFPA 13. These sprinklers are to be installed using a pipe wrench applied to the outer tube. When this is not possible, the proper sprinkler head wrench may be used with extreme care for lengths up to approximately 18". Excessive force may distort the frame thus destroying the unit.

For further important installation data, please refer to our Dry Sprinkler Caution Sheet.

ORDERING INFORMATION

SPECIFY

- Quantity • Model Number • Style
- Orifice • Temperature • Finishes desired
- Quantity - Wrenches - P/N 333010
- Quantity - Recessed Wrenches - P/N 337014
- Quantity - Protective Caps - P/N 327109-CAP (Friction Fit Recessed) • Escutcheons desired
- "A" Dimension - Distance from face of fitting to the finished ceiling regardless of escutcheon used.

GLOBE® PRODUCT WARRANTY

Globe agrees to repair or replace any of its own manufactured products found to be defective in material or workmanship for a period of one year from date of shipment.

For specific details of our warranty please refer to Price List Terms and Conditions of Sale (Our Price List).

