

# SMITH-COOPER®

I N T E R N A T I O N A L

CORPORATE OFFICE TEL (800) 766-0076 LOCAL (323) 890-4455 FAX (323) 890-4456  
WWW.SMITHCOOPER.COM



**COOPLET® Weld Outlets  
& Adapter Nipples**

# SMITH-COOPER®

## INTERNATIONAL



### COOPLET® Weld Outlets & Adapter Nipples

**COOPLET® Weld Outlets**  
are UL Listed and FM Approved for use on Sch 10, Sch 40 and the following sprinkler pipe

PIPE NAME	Manufacturers
Dyna- Thread®, Central- Thread®, XL®, XL-II®, Dyna-Flow®, Super 40®, Super- Flo®, TL®, Central 7®, BLT®	Allied Tube and Conduit Corp.
Eddylite®, Eddy Flow®, Eddy Thread 40®	Bull Moose Tube Co.
Gal-7®	IDOD Systems Co.
EZ-Flow®	Northwest Pipe Company
WLS®, Mega Flow®, Mega- Thread®, MLT®, GL®	Wheatland Tube Company
Steady Flow®, Steady Thread®	Welded Tube Corp.
Fire-Flo®, Ez- Thread®	Youngstown Tube Co.
Tex- Flow®	Tex- Tube International
SPSF®	Yieh Phui Enterprise Co. Ltd.
Fire Line Flow®, Rapid Thread®, Rapid-Thread®	Western International Forest Products Inc.

### SCI Quality Plus

- Quality control inspections both at the overseas factory and our US warehouses
- Company engineer available at your request
- \$10,000,000 product liability insurance
- SCI trademark logo on each fitting
- SCI 5/50 guarantee
- Pro Pak System makes products easier to handle and warehouse
- Orders shipped with in 24 hours
- Fax confirmation of every order
- Knowledgeable customer service personnel

### Warranty and Limitations of Liability

SMITH-COOPER INTERNATIONAL (SCI) warrants to its initial purchaser only, that its products which are delivered to this initial purchaser will be of the kind described in the order or price list and will be free of defects in workmanship or material for a period of five years from the date of delivery to our initial purchaser.

Should any failure to conform to this warranty appear within five years after the date of the initial delivery to our initial purchaser, SCI will, upon written notification thereof and substantiation that the goods have been stored, installed, maintained and operated in accordance with recognized engineering and piping practices and industry standards, correct such defects by suitable repair or replacement (which alternative shall be at the discretion of SCI) of product at SCI's own expense upon return of the defective part to SCI.

In the event that SCI elects to replace the defective product, SCI shall pay up to \$50 per defective product for total cost of replacement. In the event of multiple claims, such payment shall be no greater than \$1,000 for each installation project.

This warranty applies only during normal use that meets the above referenced conditions of installation and operation and is absolutely void if the product has been damaged after purchase or if it has been misused, repaired, altered or modified in any manner whatsoever. SCI shall not warranty any of its products if any portion of the product including without limitation, any component, gasket, housing or bolt has been modified, altered, remanufactured or replaced in any manner by any customer, user of the product or third party.

Correction of non-conformities, in the manner and for the period of time provided above, shall constitute fulfillment of all liabilities of SCI to our initial purchaser, with respect to the goods, whether based on contract, negligence, strict tort, or otherwise. It is the intention of SCI that no warranty of any kind, whether expressed or implied shall pass through our initial purchaser to any other person or corporation.

No returns will be allowed unless prior written permission of SCI is first obtained. Buyers shall be responsible for all costs of transportation as well as a restocking charge.

This warranty is exclusively for the benefit of the initial purchaser of this product from SCI and, except to the extent prohibited by applicable law, the foregoing warranty is in lieu of all other warranties, express or implied, including but not limited to warranties of fitness or merchantability.

LIMITATIONS OF LIABILITY: SCI shall not under any circumstances be liable for special or consequential damages such as, but not limited to damage to loss of other property or equipment, loss of profits or revenue, cost of capital, cost of purchased or replacement goods, claims of customers of our initial purchaser, any labor cost for repair or replacement of the product or damage caused by the product.

The remedies of our initial purchaser, and all others, set forth herein are exclusive, and the liability of SCI with respect to same shall not, except as expressly provided herein, exceed the price of the SCI products on which such liability is based.

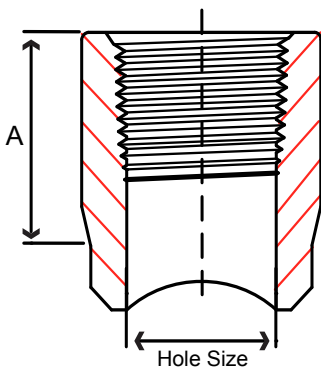
# SMITH-COOPER<sup>®</sup> INTERNATIONAL UL/FM 300# COOPLET<sup>®</sup> Weld Outlets

	Outlet Size	Pipe Run Size	Part Number	Dimensions (in)		Hole Size	Weight (lb)	Packaging	
				A	B			Inner	Master



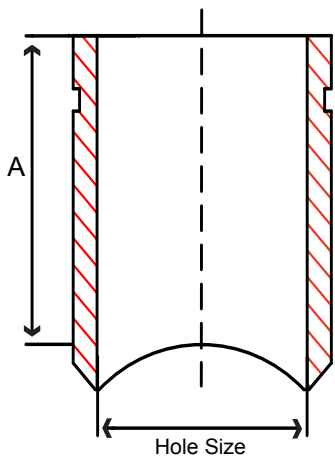
## Female Threaded

1/2	1 to 1-1/2	61FT1004010	1.063	-	0.750	0.161	50	400
1/2	2 to 2-1/2	61FT1004020	1.063	-	0.750	0.157	50	400
1/2	3 to 8	61FT1004030	1.063	-	0.750	0.155	50	400
3/4	1 to 1-1/2	61FT1006010	1.125	-	0.875	0.240	50	300
3/4	2 to 2-1/2	61FT1006020	1.125	-	0.875	0.232	50	300
3/4	2-1/2	61FT1006024	1.125	-	0.875	0.231	50	300
3/4	3 to 8	61FT1006030	1.125	-	0.875	0.229	50	300
1	1-1/4 to 1-1/2	61FT1010012	1.250	-	1.125	0.263	50	200
1	2 to 2-1/2	61FT1010020	1.250	-	1.125	0.255	50	200
1	2-1/2	61FT1010024	1.250	-	1.125	0.253	50	200
1	3 to 4	61FT1010030	1.250	-	1.125	0.250	50	200
1	5 to 8	61FT1010060	1.250	-	1.125	0.246	50	200
1-1/4	1-1/2	61FT1012014	1.375	-	1.500	0.358	70	140
1-1/4	2	61FT1012020	1.375	-	1.500	0.348	70	140
1-1/4	2-1/2	61FT1012024	1.375	-	1.500	0.343	70	140
1-1/4	3 to 4	61FT1012030	1.375	-	1.500	0.338	70	140
1-1/4	5 to 8	61FT1012060	1.375	-	1.500	0.329	70	140
1-1/2	2	61FT1014020	1.625	-	1.625	0.576	50	100
1-1/2	2-1/2	61FT1014024	1.625	-	1.625	0.567	50	100
1-1/2	3	61FT1014030	1.625	-	1.625	0.560	50	100
1-1/2	4 to 5	61FT1014040	1.625	-	1.625	0.553	50	100
1-1/2	6 to 8	61FT1014060	1.625	-	1.625	0.546	50	100
2	2-1/2	61FT1020024	1.750	-	2.000	0.878	25	50
2	3	61FT1020030	1.750	-	2.000	0.863	25	50
2	4 to 5	61FT1020040	1.750	-	2.000	0.849	25	50
2	6 to 8	61FT1020060	1.750	-	2.000	0.835	25	50
2-1/2	3	61FT1024030	2.215	-	2.500	1.498	15	30
2-1/2	4	61FT1024040	2.215	-	2.500	1.467	15	30
2-1/2	6	61FT1024060	2.215	-	2.500	1.436	15	30
2-1/2	8	61FT1024080	2.215	-	2.500	1.422	15	30
3	4	61FT1030040	2.500	-	3.000	2.431	8	16
3	6	61FT1030060	2.500	-	3.000	2.367	8	16
3	8	61FT1030080	2.500	-	3.000	2.339	8	16
4	6	61FT1040060	3.000	-	4.000	4.141	4	8
4	8	61FT1040080	3.000	-	4.000	4.067	4	8



# SMITH-COOPER<sup>®</sup> INTERNATIONAL UL/FM 300# COOPLET<sup>®</sup> Weld Outlets

	Outlet Size	Pipe Run Size	Part Number	Dimensions (in)		Hole Size	Weight (lb)	Packaging	
				A	B			Inner	Master

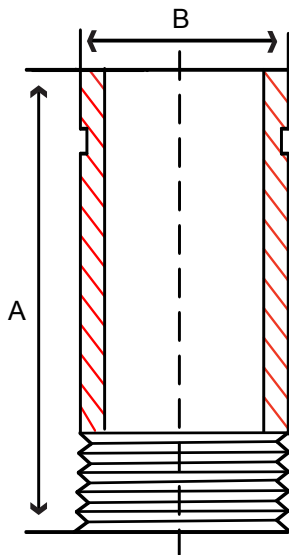


Schedule 40 Cut Grooved									
1-1/4	1-1/2	61CG1012014	3.000	-	1.500	0.531	40	80	
1-1/4	2	61CG1012020	3.000	-	1.500	0.525	40	80	
1-1/4	2-1/2	61CG1012024	3.000	-	1.500	0.521	40	80	
1-1/4	3	61CG1012030	3.000	-	1.500	0.518	40	80	
1-1/4	4 to 5	61CG1012040	3.000	-	1.500	0.515	40	80	
1-1/4	6 to 8	61CG1012060	3.000	-	1.500	0.512	40	80	
1-1/2	2	61CG1014020	3.000	-	1.625	0.641	25	50	
1-1/2	2-1/2	61CG1014024	3.000	-	1.625	0.635	25	50	
1-1/2	3	61CG1014030	3.000	-	1.625	0.630	25	50	
1-1/2	4 to 5	61CG1014040	3.000	-	1.625	0.625	25	50	
1-1/2	6 to 8	61CG1014060	3.000	-	1.625	0.620	25	50	
2	2-1/2	61CG1020024	3.000	-	2.000	0.874	16	32	
2	3	61CG1020030	3.000	-	2.000	0.861	16	32	
2	4 to 5	61CG1020040	3.000	-	2.000	0.850	16	32	
2	6	61CG1020060	3.000	-	2.000	0.838	16	32	
2	8	61CG1020080	3.000	-	2.000	0.826	16	32	
2-1/2	3	61CG1024030	3.000	-	2.500	1.397	12	24	
2-1/2	4 to 5	61CG1024040	3.000	-	2.500	1.368	12	24	
2-1/2	6	61CG1024060	3.000	-	2.500	1.340	12	24	
2-1/2	8	61CG1024080	3.000	-	2.500	1.327	12	24	
3	4	61CG1030040	3.000	-	3.000	1.864	6	12	
3	6	61CG1030060	3.000	-	3.000	1.801	6	12	
3	8	61CG1030080	3.000	-	3.000	1.774	6	12	
4	6	61CG1040060	4.000	-	4.000	3.507	4	8	
4	8	61CG1040080	4.000	-	4.000	3.435	4	8	
6	8	61CG1060080	4.000	-	4.000	6.578	-	2	
8	8	61CG1080080	4.000	-	4.000	11.621	-	2	

Size-on-Size Cut Grooved COOPLET<sup>®</sup> Weld Outlets are Available but not listed



	Size	Length	Part Number	Dimension (in)			Weight (lb)	Packaging	
				A	B	TPI		Inner	Master



**Schedule 40 Threaded x Grooved**

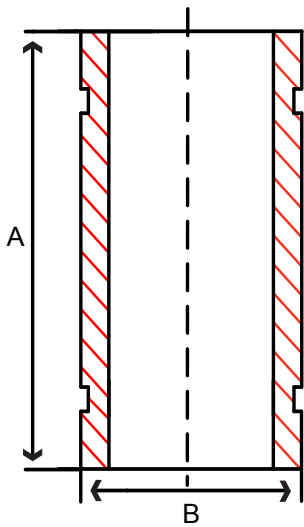
1	4	61TG4010040	4.000	1.320	11.5	0.498	-	100
1-1/4	4	61TG4012040	4.000	1.660	11.5	0.678	-	50
1-1/2	4	61TG4014040	4.000	1.900	11.5	0.799	-	50
1-1/2	12	61TG4014120	12.000	1.900	11.5	2.626	-	15
2	3	61TG4020030	3.000	2.380	11.5	0.752	-	50
2	4	61TG4020040	4.000	2.380	11.5	1.099	-	25
2	6	61TG4020060	6.000	2.380	11.5	1.708	-	25
2	8	61TG4020080	8.000	2.380	11.5	2.316	-	18
2	10	61TG4020100	10.000	2.380	11.5	2.926	-	14
2	12	61TG4020120	12.000	2.380	11.5	3.535	-	14
2-1/2	4	61TG4024040	4.000	2.880	8.0	1.617	-	27
2-1/2	12	61TG4024120	12.000	2.880	8.0	5.539	-	9
3	2-5/8	61TG4030025	2.625	3.500	8.0	1.326	-	24
3	3	61TG4030030	3.000	3.500	8.0	1.511	-	24
3	4	61TG4030040	4.000	3.500	8.0	2.107	-	18
3	6	61TG4030060	6.000	3.500	8.0	3.459	-	12
3	8	61TG4030080	8.000	3.500	8.0	4.723	-	8
3	10	61TG4030100	10.000	3.500	8.0	5.988	-	6
3	12	61TG4030120	12.000	3.500	8.0	7.252	-	6
4	3	61TG4040030	3.000	4.500	8.0	1.697	-	12
4	4	61TG4040040	4.000	4.500	8.0	2.601	-	12
4	6	61TG4040060	6.000	4.500	8.0	4.937	-	8
4	8	61TG4040080	8.000	4.500	8.0	6.736	-	5
4	10	61TG4040100	10.000	4.500	8.0	8.535	-	4
4	12	61TG4040120	12.000	4.500	8.0	10.335	-	4
5	6	61TG4050060	6.000	5.560	8.0	6.636	-	2
5	12	61TG4050120	12.000	5.560	8.0	13.949	-	1
6	6	61TG4060060	6.000	6.630	8.0	8.626	-	2
6	12	61TG4060120	12.000	6.630	8.0	18.118	-	1
8	6	61TG4080060	6.000	8.630	8.0	13.257	-	1
8	12	61TG4080120	12.000	8.630	8.0	27.549	-	1

**Schedule 80 Threaded x Grooved**

2	3	61TG8020030	3.000	2.380	11.5	1.136	-	50
2	4	61TG8020040	4.000	2.380	11.5	1.555	-	25
2	6	61TG8020060	6.000	2.380	11.5	2.393	-	25
2	8	61TG8020080	8.000	2.380	11.5	3.230	-	18
2	10	61TG8020100	10.000	2.380	11.5	4.067	-	12
2	12	61TG8020120	12.000	2.380	11.5	4.905	-	12
3	2-5/8	61TG8030025	2.625	3.500	8.0	1.911	-	24
3	3	61TG8030030	3.000	3.500	8.0	2.231	-	24
3	4	61TG8030040	4.000	3.500	8.0	3.086	-	18
3	6	61TG8030060	6.000	3.500	8.0	4.796	-	12
3	8	61TG8030080	8.000	3.500	8.0	6.505	-	8
3	10	61TG8030100	10.000	3.500	8.0	8.215	-	6
3	12	61TG8030120	12.000	3.500	8.0	9.925	-	6
4	3	61TG8040030	3.000	4.500	8.0	3.287	-	12
4	4	61TG8040040	4.000	4.500	8.0	4.537	-	12
4	6	61TG8040060	6.000	4.500	8.0	7.036	-	8
4	8	61TG8040080	8.000	4.500	8.0	9.535	-	5
4	10	61TG8040100	10.000	4.500	8.0	12.034	-	4
4	12	61TG8040120	12.000	4.500	8.0	14.533	-	4

\*All Grooves are Cut Grooved

	Size	Length	Part Number	Dimension (in)			Weight (lb)	Packaging	
				A	B	C		Inner	Master



**Schedule 40 Grooved x Grooved**

2	3	61GG4020030	3.000	2.380	-	0.826	-	50
2	4	61GG4020040	4.000	2.380	-	1.138	-	50
2	6	61GG4020060	6.000	2.380	-	1.747	-	25
2	8	61GG4020080	8.000	2.380	-	2.356	-	18
2	10	61GG4020100	10.000	2.380	-	2.965	-	14
2	12	61GG4020120	12.000	2.380	-	3.574	-	14
3	2-5/8	61GG4030025	2.625	3.500	-	1.541	-	24
3	3	61GG4030030	3.000	3.500	-	1.778	-	24
3	4	61GG4030040	4.000	3.500	-	2.410	-	18
3	6	61GG4030060	6.000	3.500	-	3.674	-	12
3	8	61GG4030080	8.000	3.500	-	4.938	-	8
3	10	61GG4030100	10.000	3.500	-	6.202	-	6
3	12	61GG4030120	12.000	3.500	-	7.466	-	6
4	3	61GG4040030	3.000	4.500	-	2.449	-	12
4	4	61GG4040040	4.000	4.500	-	3.349	-	12
4	6	61GG4040060	6.000	4.500	-	5.148	-	8
4	8	61GG4040080	8.000	4.500	-	6.947	-	5
4	10	61GG4040100	10.000	4.500	-	8.747	-	4
4	12	61GG4040120	12.000	4.500	-	10.334	-	4

**Schedule 80 Grooved x Grooved**

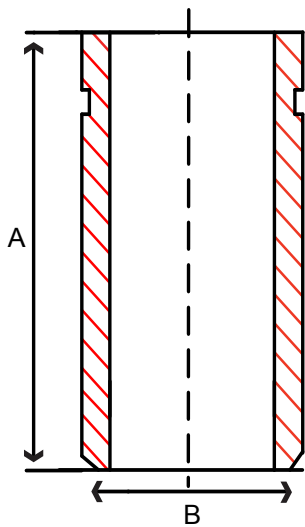
2	3	61GG8020030	3.000	2.380	-	1.176	-	50
2	4	61GG8020040	4.000	2.380	-	1.595	-	25
2	6	61GG8020060	6.000	2.380	-	2.433	-	25
2	8	61GG8020080	8.000	2.380	-	3.270	-	18
2	10	61GG8020100	10.000	2.380	-	4.107	-	12
2	12	61GG8020120	12.000	2.380	-	4.945	-	12
3	2-5/8	61GG8030025	2.625	3.500	-	2.125	-	24
3	3	61GG8030030	3.000	3.500	-	2.446	-	24
3	4	61GG8030040	4.000	3.500	-	3.301	-	18
3	6	61GG8030060	6.000	3.500	-	5.010	-	12
3	8	61GG8030080	8.000	3.500	-	6.720	-	8
3	10	61GG8030100	10.000	3.500	-	8.469	-	6
3	12	61GG8030120	12.000	3.500	-	10.139	-	6
4	3	61GG8040030	3.000	4.500	-	3.499	-	12
4	4	61GG8040040	4.000	4.500	-	4.748	-	12
4	6	61GG8040060	6.000	4.500	-	7.247	-	8
4	8	61GG8040080	8.000	4.500	-	9.746	-	5
4	10	61GG8040100	10.000	4.500	-	12.245	-	4
4	12	61GG8040120	12.000	4.500	-	14.745	-	4

\*All Grooves are Cut Grooved

	Size	Length	Part Number	Dimension (in)			Weight (lb)	Packaging	
				A	B	C		Inner	Master

**Schedule 40 Grooved x Bevel**

1	3	61GB4010030	3.000	1.320	-	0.3700	-	150
1	4	61GB4010040	4.000	1.320	-	0.5003	-	100
1-1/4	4	61GB4012040	4.000	1.660	-	0.6782	-	50
1-1/2	4	61GB4014040	4.000	1.900	-	0.7996	-	50
2	4	61GB4020040	4.000	2.380	-	1.1386	-	25
2-1/2	4	61GB4024040	4.000	2.880	-	1.6166	-	27
3	4	61GB4030040	4.000	3.500	-	2.4101	-	18
4	6	61GB4040060	6.000	4.500	-	5.1485	-	8
5	6	61GB4050060	6.000	5.560	-	6.6365	-	2
6	6	61GB4060060	6.000	6.630	-	8.6258	-	2
8	6	61GB4080060	6.000	8.630	-	13.2568	-	2



\*All Grooves are Cut Grooved



**Forged Steel Fittings & Outlets**

1/8" – 4" Threaded & S/W  
2000#, 3000#, 6000#



**COOPLOK™ Grooved**

UL/FM Couplings – Flexible & Rigid  
Mechanical Tees, Fittings & Flanged Adapters



**Ductile Iron Threaded Fittings**

1/2" – 2-1/2" Class 300  
UL/FM @ 500 PSI



**Merchant Steel Couplings & Fittings**

1/8" – 12" STD-XH  
Full, Half, API Style



**Valves**

Carbon Steel – Stainless – Brass  
1/4" – 4"



**Cast Iron Threaded Fittings**

1/2" – 2-1/2" Class 125  
UL/FM @ 300 PSI



**Malleable Iron Pipe Fittings**

1/8" – 8" Black & Galvanized  
UL/FM 150# & 300#



**Bronze Fittings & Flanges  
Brass Nipples & Pipe**

1/8" – 6" 125#



**COOPLET® Weld Outlets  
and Adapter Nipples**

UL/FM 300# Welded Outlet  
Threaded 1/2" to 4", Grooved 1-1/4" to 6"



**Cast Iron Flanged Fittings & Flanges**

Flanged Fittings 1" to 30", 125# & 250#  
Cast Iron 125#, 250#, Flanges  
Blind, Threaded, Reducing Threaded



**Butterfly & Gate Valves**

Lug & Wafer Flanged, Mechanical  
Joint, Threaded,  
Push-On, Check



**Nipples**

1/8" – 8" Black & Galvanized  
Welded – Seamless  
Schedule 40, 80, and XXH, Brass Schedule 40

**SMITH-COOPER®**  
INTERNATIONAL

2867 VAIL AVENUE, COMMERCE, CA 90040 TEL (800) 766-0076 LOCAL (323) 890-4455 FAX (323) 890-4456

WWW.SMITHCOOPER.COM