

The Gruvlok® Figure 7400 Rigidlite Coupling is specially designed to provide a rigid, locked-in pipe connection to meet the specific demands of rigid design steel pipe. Fast and easy swing-over installation of the rugged lightweight housing produces a secure, rigid pipe joint. The Figure 7400 Rigidlite Coupling is UL/ULC Listed and FM Approved for fire protection service in both wet and dry systems, with roll grooved or cut grooved steel pipe prepared in accordance with Gruvlok grooving specifications. Working pressure ratings shown are for reference only and are based on Schedule 40 pipe. For the latest UL/ULC listed and FM approved pressure ratings versus pipe schedule, see www.anvilstar.com or contact your local AnvilStar Representative.



The Figure 7400 Rigidlite Coupling with a Pre-Lubricated Grade "E" EPDM, Type "A" gasket (coupling is easily identified by purple nuts) is intended for use in fire protection systems installed in accordance with NFPA Standard 13 "Sprinkler Systems".



For Listing/Approval Details and Limitations, visit our website at www.anvilstar.com or contact an Anvil®/AnvilStar™ Sales Representative.

DN 50 and DN200 sizes are VdS approved.

- Available galvanized.

* When ordering, refer to product as FP7400.

MATERIAL SPECIFICATIONS

HOUSING:

Ductile Iron conforming to ASTM A-536, Grade 65-45-12

ANSI BOLTS & HEAVY HEX NUTS:

Heat treated, oval-neck track head bolts conforming to ASTM A-183 Grade 2 with a minimum tensile strength of 110,000 psi and heavy hex nuts of carbon steel conforming to ASTM A-563 Grade A or Grade B, or J995 Grade 2. Bolts and nuts are provided zinc electroplated as standard.

COATINGS:

Rust inhibiting paint Color: ORANGE (standard)
Hot Dipped Zinc Galvanized (optional)
Other available options: Example: RAL3000 or RAL9000 Series
For other coating requirements contact an AnvilStar Representative.

LUBRICATION:

Standard Gruvlok
Gruvlok Xtreme™ required for dry pipe systems and freezer applications.

GASKETS: Materials

Properties as designated in accordance with ASTM D-2000.

Pre-Lubricated Grade "E" EPDM, Type A Gasket (Violet color code)

-40°F to 150°F (Service Temperature Range)(-40°C to 66°C)
Recommended for wet and dry (oil free air) pipe fire protection sprinkler systems. For dry pipe systems and freezer applications, Gruvlok Xtreme™ Lubricant is required.

Grade "E" EPDM (Green color code)

-40°F to 230°F (Service Temperature Range)(-40°C to 110°C)
Recommended for water service, diluted acids, alkalies solutions, oil-free air and many chemical services.

NOT FOR USE IN PETROLEUM APPLICATIONS.

GASKET TYPE:

Standard C Style
Flush Gap (1 1/4" - 8")

PROJECT INFORMATION

APPROVAL STAMP

Project:	<input type="checkbox"/> Approved
Address:	<input type="checkbox"/> Approved as noted
Contractor:	<input type="checkbox"/> Not approved
Engineer:	Remarks:
Submittal Date:	
Notes 1:	
Notes 2:	

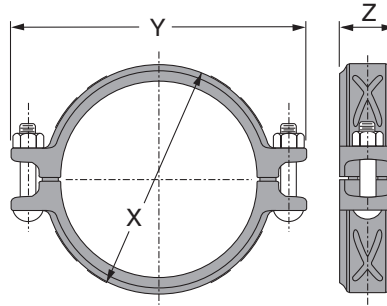


FIGURE 7400 RIGIDLITE® COUPLING

Nominal Size	Pipe O.D.	Max. Working Pressure	Max. End Load	Range of Pipe End Separation	Coupling Dimensions			Coupling Bolts		Specified Torque §		Approx. Wt. Ea.
					X	Y	Z	Qty.	Size	Min.	Max.	
In./DN(mm)	In./mm	PSI/bar	Lbs./kN	In./mm	In./mm	In./mm	In./mm		In./mm	Ft.-Lbs./N-m		Lbs./Kg
1¼ 32	1.660 42.2	300 20.7	649 2.89	0-½ 0-3.2	2½ 67	4¾ 121	1¾ 44	2	¾ x 2¼ M10 x 57	30 40	45 60	1.3 0.6
1½ 40	1.900 48.3	300 20.7	851 3.78	0-½ 0-3.2	2½ 73	4¾ 124	1¾ 44	2	¾ x 2¼ M10 x 57	30 40	45 60	1.4 0.6
2 50*	2.375 60.3	300 20.7	1,329 5.91	0-½ 0-3.2	3¼ 83	5½ 140	1¾ 44	2	¾ x 2¼ M10 x 57	30 40	45 60	1.6 0.7
2½ 65	2.875 73.0	300 20.7	1,948 8.66	0-½ 0-3.2	3¾ 98	6 152	1¾ 44	2	¾ x 2¼ M10 x 57	30 40	45 60	1.9 0.9
3 O.D. 76.1	2.996 76.1	300 20.7	2,115 9.41	0-½ 0-3.2	4 102	5½ 149	1¾ 44	2	¾ x 2¼ M10 ax 57	30 40	45 60	1.9 0.9
3 80	3.500 88.9	300 20.7	2,886 12.84	0-½ 0-3.2	4½ 114	6¾ 171	1¾ 44	2	¾ x 2¾ M10 x 70	30 40	45 60	2.1 1.0
4 100	4.500 114.3	300 20.7	4,771 21.22	0-¾ 0-6.4	5½ 143	7¾ 197	1⅞ 48	2	¾ x 2¾ M10 x 70	30 40	45 60	3.1 1.4
5½ O.D. 139.7	5.500 139.7	300 20.7	7,127 31.70	0-¾ 0-6.4	6¾ 171	9¼ 235	2 51	2	1/2 x 3 M12 x 76	80 110	100 150	4.5 2.0
5 125	5.563 141.3	300 20.7	7,292 32.44	0-¾ 0-6.4	6¾ 175	9¼ 235	2 51	2	½ x 3 M12 x 76	80 110	100 150	4.6 2.1
6½ O.D. 165.1	6.500 165.1	300 20.7	9,955 44.28	0-¾ 0-6.4	7¾ 200	10¾ 264	2 51	2	½ x 3 M12 x 76	80 110	100 150	5.5 2.5
6 150	6.625 168.3	300 20.7	10,341 46.00	0-¾ 0-6.4	7¾ 200	10¾ 264	2 51	2	½ x 3 M12 x 76	80 110	100 150	5.5 2.5
8 200*	8.625 219.1	300 20.7	17,528 77.97	0-¾ 0-3.2	10¼ 260	12¾ 324	2½ 60	2	½ x 3 M12 x 76	80 110	100 150	8.4 3.8

Note: 7400 Grade "E" EPDM gasket is required for use in copper system.

* DN 50 and DN 200 sizes are VdS approved.

§ - For additional Bolt Torque information see Technical Data Section.

Other sizes available, see Gruvlok Catalog or contact an AnvilStar Representative.



WARNING

For dry pipe systems and freezer applications lubrication of the gasket is required, Gruvlok® Xtreme™ Lubricant is required.